

PHILIPS

Professional Display Solutions

New wave **Infinite possibilities**

Philips L-Line: 7000 Series LED

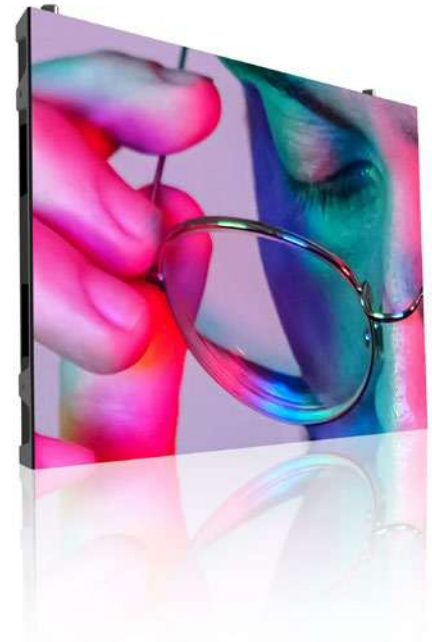
Unleash your imagination even more

Go
with the
flow



Infinite possibilities

L-Line 7000 Series redefines the visual experience with exhilarating flow.



New wave. Infinite possibilities. The Philips L-Line 7000 Series LED empowers truly unique display creations that redefine audience engagement. Deliver your most immersive visual experiences ever with seamless display connectivity, multiple sizing, and curvature to design a breathtaking display in any shape, form, or flow.

Retail

Transform any retail space into the ultimate shopping experience. Have each message stand out from the competition with high-brightness LED screens designed to turn passers-by into shoppers. Integrated directional sound adds further depth to promotions, specials and custom content.

Public venues

Inform and engage visitors in public spaces. High-brightness LED ensures that content is always visible in different environments. Utilize the bezel-free design to create a clean look, or fit into a custom installation for protective or branding purposes.



Packed with all the **quality** and **resilience**

Versatile sizing

The Philips L-Line 7000 series LED panels come with a height of 25 cm and is available in 50 cm, 75 cm and 100 cm widths. These displays are ready to be installed in any landscape format with no limitations to size. Also available with bevelled corners to form curved designs in both convex and concave formats.

Active Health **Monitoring**

Achieve perfection through precision. Active Health Monitoring makes maintenance fast, simple, and predictable by displaying the exact item of failure and location. Utilising this software that works in real-time both online and offline, replacing the relevant part becomes an efficient process, and a must for display owners with many geographical locations.

Dynamic **Power Saving**

Tested for energy efficiency, the 7000 series is factory calibrated for easier installation, and can save more than 20% running costs with dynamic power saving for low cost of ownership.

Factory **calibrated**

Every Philips L-Line LED panel is calibrated in our factory under perfect circumstances. That means there's no need for further calibration on location, resulting in quicker installations. Calibration and configuration files are available to ensure fast maintenance.

Dynamic **Panel Connect**

Mix and match each of the Philips L-Line 7000 LED panel sizes to form a single display of any shape and dimension. Dynamic flexible alignment pins ensure a perfect fit in any circumstance – resulting in a smooth, seamless display surface. For added convenience and efficiency, each LED panel features openings on each side to allow for versatile wired connection between the LED panels and any external input connection. Openings on the top and bottom of the LED panel can be popped out in case access is only available from the top or bottom of the panel.

Unique in every way

Create bezel-free displays of any shape, size or resolution. The modular design of Philips Professional LED panels means you can adapt to any space. Build vast, immersive installations or assemble intriguing patterns. Easily create displays that flow seamlessly around doorways and other openings. Even corners and curved displays become easy to create with the new Philips 7000 series.

Built-in cable and data wiring

Your Philips Professional LED Display features built-in cable wiring to keep power and data cables tidy. Display panels are daisy-chained for both power and data, allowing you to minimise clutter and speed up installation.

High-performance LED

Philips Professional LED Displays use high-performance LEDs, which are tested thoroughly, energy efficient and cost effective.

IP30 rated conformal coating

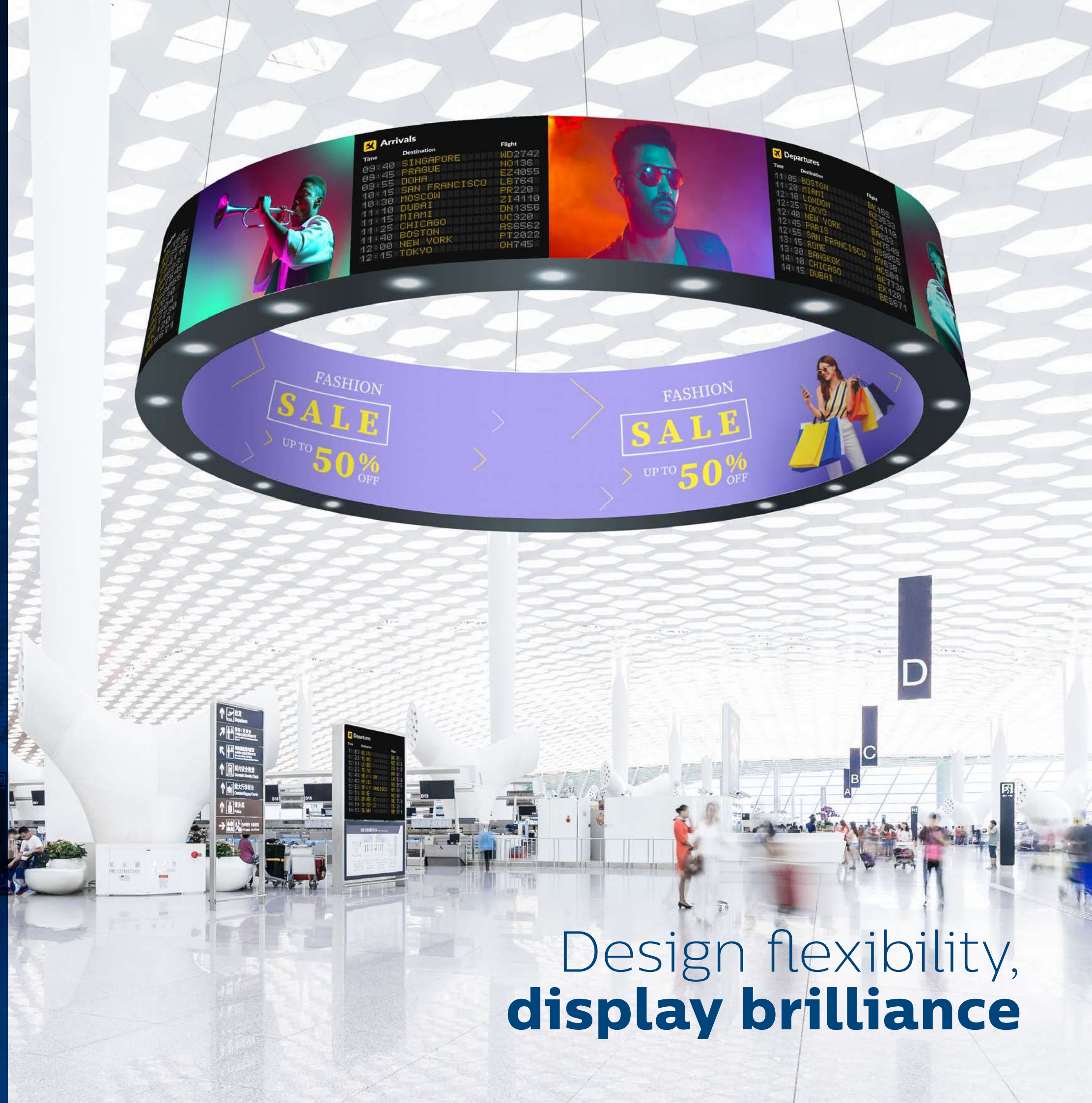
Dust, dirt, fungus and moisture resistant conformal coating protects this product and enables easier maintenance. IP30 rated and certified against ingress for reduced chance of short circuit from dust and corrosion.

Fire retardant

Fire retardant design slows down the spread of flames in the event of fire, and help protect the structural integrity of the LED panel in case of fire. Tested and certified with European standard B1 DIN4102, British standard (BS476-7 class 2), and North-American standard UL94.

Optional easy-mount brackets

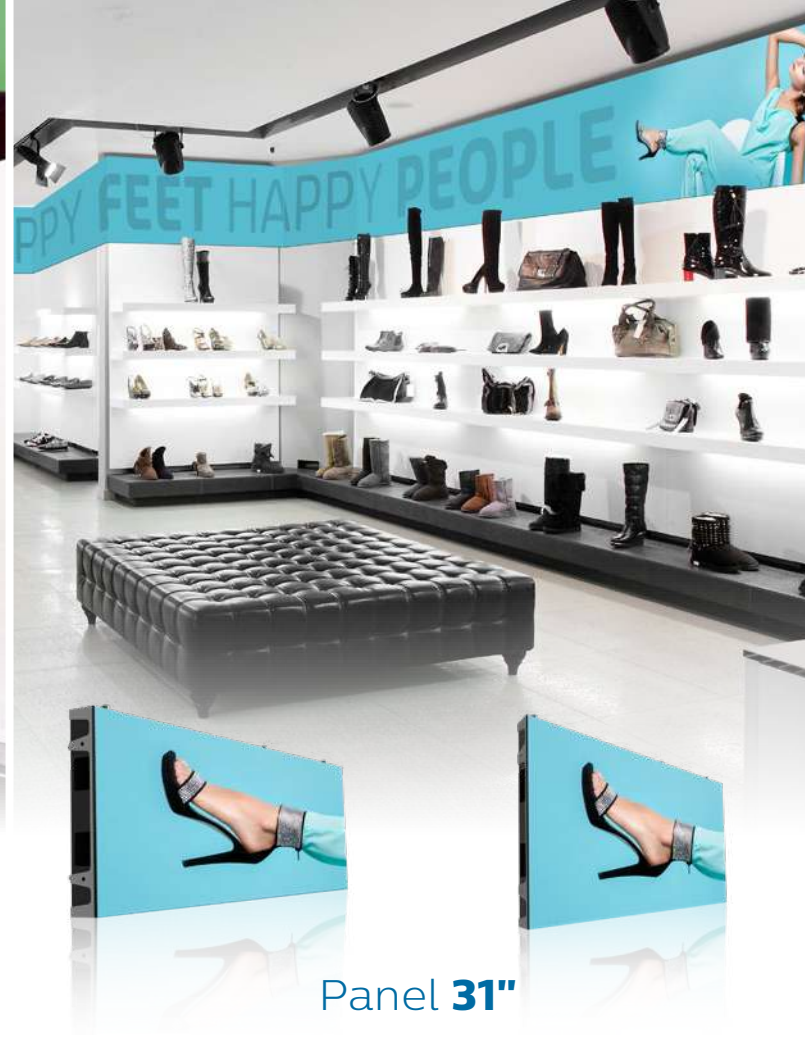
Patented easy-mount brackets make installation even faster. These optional items are available for flat LED mounting, convex curved (177.5/175/172.5 degree), and L-shape 90 degree corners.



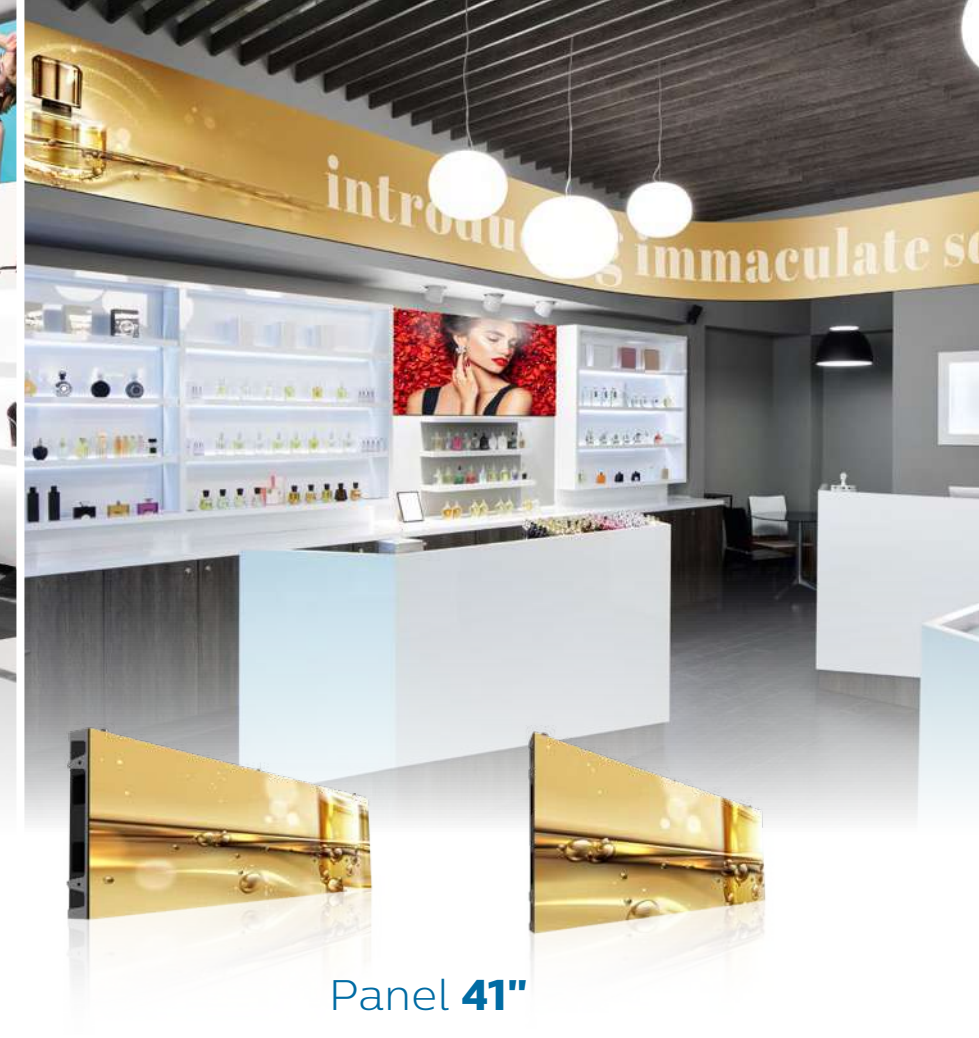
Design flexibility,
display brilliance



Panel 22"



Panel 31"



Panel 41"

Panel model	22BDL7224L	22BDL7324L	31BDL7224L	31BDL7324L	41BDL7224L	41BDL7324L
LED type	SMD 1515 Copper wire	SMD 1515 Copper wire	SMD 1515 Copper wire	SMD 1515 Copper wire	SMD 1515 Copper wire	SMD 1515 Copper wire
Pixel pitch	2.4	2.4	2.4	2.4	2.4	2.4
Panel aspect ratio	2:1	2:1	3:1	3:1	4:1	4:1
Panel dimensions (WxHxD in mm)	500x250x40	500x250x40	750x250x40	750x250x40	1000x250x40	1000x250x40
Panel diagonal size (inch)	22"	22"	31.1"	31.1"	40.6"	40.6"
Side angle (degree)	90	45	90	45	90	45
Panel resolution (W×H in pixels)	208x104	208x104	312x104	312x104	416x104	416x104
Panel pixels	21.632	21.632	32.448	32.448	43.264	43.264
Panel area (m2)	0.125	0.125	0.1875	0.1875	0.25	0.25
Brightness uniformity	>=97%	>=97%	>=97%	>=97%	>=97%	>=97%
Max. brightness (nits)	±1200*	±1200*	±1200*	±1200*	±1200*	±1200*
Max. contrast ratio	5000:1*	5000:1*	5000:1*	5000:1*	5000:1*	5000:1*
Controlling system	NovaStar	NovaStar	NovaStar	NovaStar	NovaStar	NovaStar
Weight (KG)	3.34	3.19	4.86	4.5	5.89	5.75
Refresh rate (Hz)	2100~3900	2100~3900	2100~3900	2100~3900	2100~3900	2100~3900
Panel max power consumption AC (W)	<60	<60	<85	<85	<105	<105
Panel typical power consumption (W)	<20	<20	<29	<29	<35	<35
Usage	24/7 Hrs, Indoor	24/7 Hrs, Indoor	24/7 Hrs, Indoor	24/7 Hrs, Indoor	24/7 Hrs, Indoor	24/7 Hrs, Indoor
Orientation	Landscape	Landscape	Landscape	Landscape	Landscape	Landscape
Regulatory approvals	EN55032, EN55035, EN61000-3-2, EN61000-3-3, IEC/UL60950, IEC/UL62368, IEC62471, RoHS, FCC SDOC, Part 15, Class A					
Fire retardancy certification	BS476, UL94, B1 DIN4102					
Miscellaneous	Conformal coating (hub board and module back)					

* According to IDMS

